



GOBIERNO  
DE ESPAÑA

MINISTERIO  
DE LA PRESIDENCIA, RELACIONES CON LAS CORTES  
E IGUALDAD

SECRETARÍA DE ESTADO  
DE IGUALDAD

INSTITUTO DE LA MUJER  
Y PARA LA IGUALDAD DE OPORTUNIDADES



# THE INSTITUTE OF WOMEN AND FOR EQUAL OPPORTUNITIES (Spain)

Equinet Annual General Meeting (AGM)

Brussels, Wednesday 7 November 2018

*Ana Lite Mateo*

*Senior Adviser*

*Institute of Women and for Equal Opportunitites*

[alite@inmujer.es](mailto:alite@inmujer.es)

[secretaria-sgeie@inmujer.es](mailto:secretaria-sgeie@inmujer.es)

## THE INSTITUTE OF WOMEN

Works to support the progress of women in all areas of society since 1983.

**Mission:** to foster gender equality and the equal participation of women and men in all areas of public life, in particular in political, economic, cultural and social life, and to foster and implement gender mainstreaming.

It is the **equality body** under the EU Gender Equal Treatment Directives

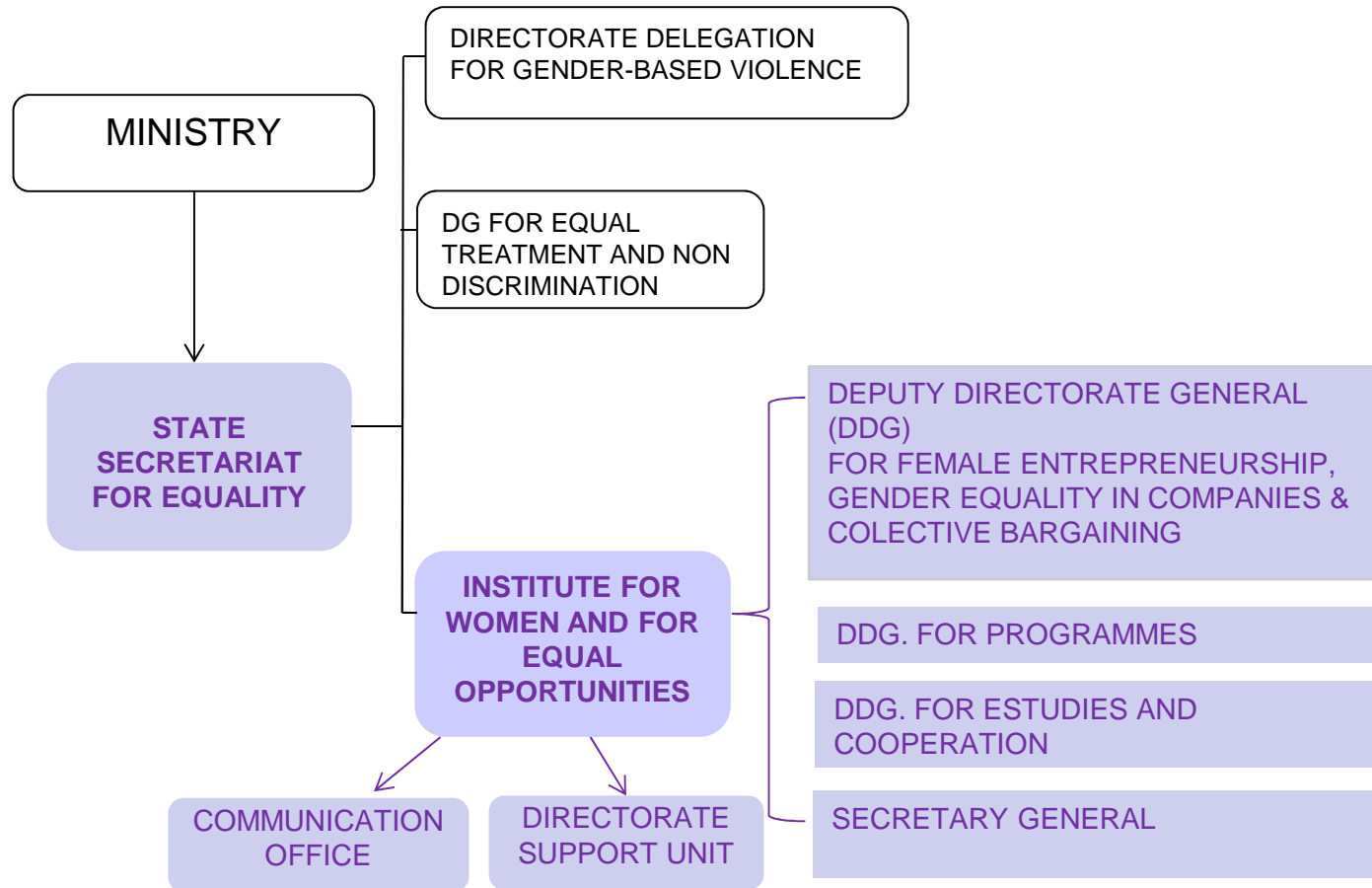


GOBIERNO DE ESPAÑA

MINISTERIO DE LA PRESIDENCIA, RELACIONES CON LAS CORTES E IGUALDAD

SECRETARÍA DE ESTADO DE IGUALDAD

INSTITUTO DE LA MUJER Y PARA LA IGUALDAD DE OPORTUNIDADES



<http://www.inmujer.gob.es/>

Among specific functions carried out by the IWEQ as equality body are:

- To **receive and channel** (*in the administrative order*) discrimination **complaints** on the **ground of sex**, independently assisting victims of discrimination on how to proceed with their claims.
- To **prepare and publish reports, studies** and formulate **recommendations** on gender equality.
- To **collaborate** with non-governmental state-level organizations, public or private entities and international organisations dedicated to gender equality issues.

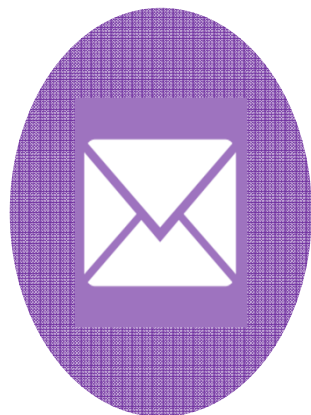
Additionally, the IWEQ

- **Studies** the situation of women in the legal, social, economic, educational, cultural and health fields.
- Gathers **information**, documentation and **statistics** concerning women.
- **Supports policy making** and **monitoring** of current legislation.
- Develops initiatives to **raise awareness** of gender equality.
- Provides and promote **training** for women and men on gender equality.

- Promotes **relations with similar institutions** at local and regional level, especially through the Sectorial Conference and other cooperation bodies.
- Supports **services and programmes to tackle gender inequalities**, with a special focus on women belonging to vulnerable groups.
- Provides **advice services on women's rights and gender discrimination**.
- Promotes the full participation of women in the **Information Society**.
- Contributes to **recovering and preserving the collective historical memory of women**.

Contact us

MORE  
INFORMATION



**Thank you!**

EMAIL:

[secretaria-sgeie@inmujer.es](mailto:secretaria-sgeie@inmujer.es)



GOBIERNO  
DE ESPAÑA

MINISTERIO  
DE LA PRESIDENCIA, RELACIONES CON LAS CORTES  
E IGUALDAD

SECRETARÍA DE ESTADO  
DE IGUALDAD

INSTITUTO DE LA MUJER  
Y PARA LA IGUALDAD DE OPORTUNIDADES